

# Government Support & Finance



# Contents

01

The basics.....

4

02

Support for your investment project.....

24

03

Choose France as a venue for takeovers.....

34

04

Recruiting and training your employees.....

46

05

Support for your R&D programs and innovative projects.....

54

06

Encouraging investments to protect the environment.....

64

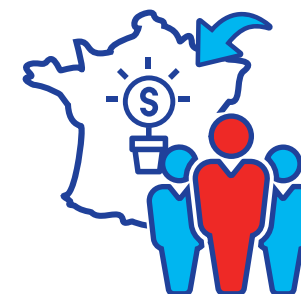
07

How to develop your startup project.....

72

# The basics

-  **#1** Business France: the agency serving foreign investors in France
-  **#2** An ambitious reform program
-  **#3** Supporting your project in France
-  **#4** Government funding programs at a glance
-  **#5** Who should I contact depending on my project status?
-  **#6** Raising finance on the Paris financial marketplace
-  **#7** Key stakeholders



The “Doing Business in France” practical guides are intended to inform you about all the legal, tax and social aspects of your investment and your subsidiary’s operations in France.

They provide you with clear, reliable and detailed information to ensure the success of high-potential projects.



## #1 BUSINESS FRANCE: THE AGENCY SERVING FOREIGN INVESTORS IN FRANCE

Exporting, investing and expanding abroad

### Simplify and fast-track project delivery

Business France provides you with made-to-measure, confidential support to succeed with your investments in France, whatever projects they involve:

- Discover France's key advantages
- Plan a new investment
- Boost your presence at existing sites
- Find industrial or technological partners
- Evaluate acquisition opportunities or financial investments

### Connect - Fast-track - Succeed

At every stage of the project, Business France personnel work with their network of public, private, national and regional partners to facilitate and accelerate project delivery.

Their aim:  
For investment projects to succeed.

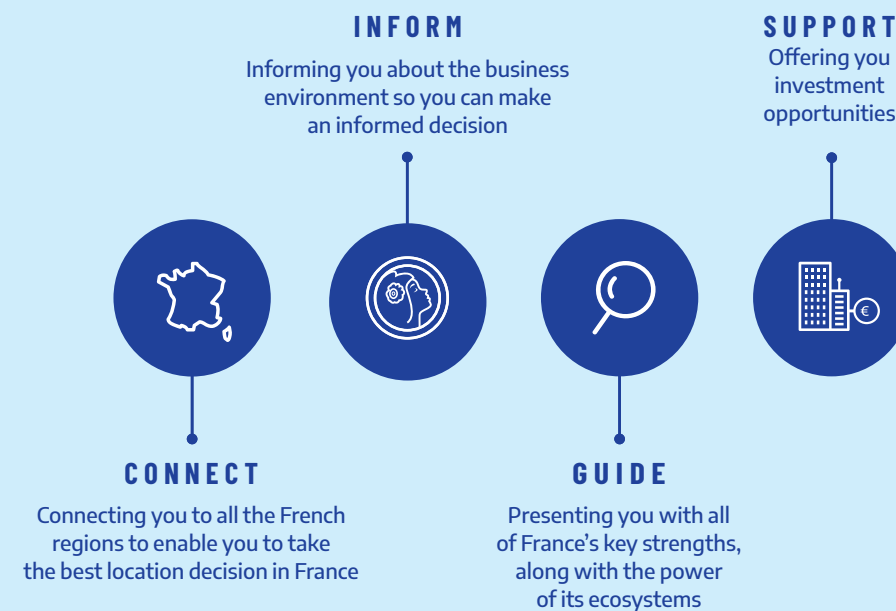
Their motivation:  
The satisfaction of investors who chose France for their international investment strategy.

To realize your investments in France:  
[choosefrance.fr](https://choosefrance.fr)

To facilitate the installation of talent in France:  
[welcometofrance.com](https://welcometofrance.com)

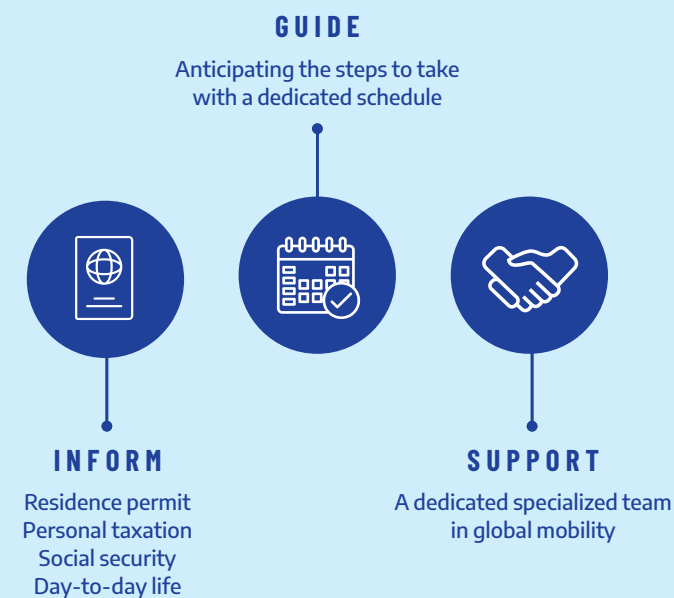
## YOUR INVESTMENTS IN FRANCE

[businessfrance.com](https://businessfrance.com)



## TALENT MOBILITY IN FRANCE

[welcometofrance.com](https://welcometofrance.com)



## CHOOSE FRANCE !

The investment attractiveness summit



**At Choose France!**, a summit focusing on France's attractiveness to business, **140 heads of multinationals from various sectors** committed to investment projects in France. The event was held in Versailles on January 20, 2020 and was attended by the French President.

The summit was an opportunity to showcase France's attractiveness, while underlining the deep economic transformation being undertaken to support investment and business growth.



## #2 AN AMBITIOUS REFORM PROGRAM



### Transforming France's social model

Offering businesses greater flexibility and building a highly skilled society through training, guidance, professional integration and support for talents in industry.



### Promoting growth and innovation

An action plan for growth and the transformation of business, enabling firms to innovate, evolve, grow and create jobs.

An ambitious transformation of regulations and government processes, for greater simplicity and acknowledgement of the right to make errors.



### Encouraging investments

A new tax environment to encourage investment and employment.



### Supporting industries of the future

A Major Investment Plan to invest in tomorrow's technologies.



### Recovery plan

To support the economy, protect employment and assist companies, the Government will implement a €100 billion emergency plan.



## #3 SUPPORTING YOUR PROJECT IN FRANCE

### Identify

#### Is my project eligible for a funding program?

Before you begin, determine whether your project is eligible for public funding.

Business France and its partners will help you perform an initial assessment of your project and inform you about the funding programs in place.

### Secure

#### How do I identify the most suitable funding program?

Based on an assessment of your project (type, costs, impacts, business sector, etc.), Business France works in conjunction with national bodies and local partners to help you determine the government funding available to you (type, intensity, maximum amount, etc.) according to your project's state of progress.

#### What criteria will my project have to meet?

Depending on the size of your business, as well as the purpose and location of your project, Business France and its partners set out

the various eligibility criteria and thresholds applicable, as well as the timetables and practicalities of the application processes you must complete, so as to increase your chances of success.

### Connect

#### How do I apply?

Applications must be accompanied by supporting arguments that will convince the bodies processing them. Business France will help you produce quality content.

#### Which institutions are involved?

Meeting the right contacts.

Business France and its partners facilitate and coordinate interaction with the French public-sector bodies responsible for supporting the projects of investors: ministries, local authorities, government agencies, etc.

#### What if my project doesn't meet the criteria for a particular aid scheme?

Business France will look for other support mechanisms for which your project may be eligible and identify ways in which this process could be simplified.

## HELPING YOU MAKE A SUCCESS OF YOUR PROJECT

### YOUR ACTIONS

**Presenting** your project to Business France  
Expressing your needs and expectations

**Forwarding** a detailed business plan

**Meeting** financial backers  
Presenting your project

**Clarifying** your project  
Making a formal request

**Filing** your request  
Exchanging with the appraising body

**Signing** an aid agreement  
Justifying investments and jobs created

### OUR SUPPORT

**Analyzing** your project  
- Targeting aid  
- Informing you of the terms and conditions

**Selecting** tools  
- Ensuring the pre-eligibility of your project with financial backers  
- Establishing a list of eligible expenditure

**Putting** you in touch with financial backers  
- Connecting you with the right contact people  
- Supporting you during the presentation of your project

**Approving** the eligibility of your project, thresholds and eligible expenditure to be respected

**Processing** your dossier  
Examining the business plan, the leveraging of aid, and the economic impact

**Assigning** aid and paying out funds according to the agreed procedures

● Business France and its regional partners

● Public financial backers



## #4 GOVERNMENT FUNDING PROGRAMS AT A GLANCE

### Before you begin

Government support programs are covered by the EU regulations uniformly applicable to all European Union countries. The aim of these regulations is to prevent unfair competition between companies by allocating funds to certain economic players to the detriment of their competitors.

The French transposition of these regulations paves the way for government support that is compatible with the EU's regulatory framework, thus ensuring that investors operate within the law. Its purpose is also to direct France's public resources towards measures that boost economic growth in the regions and the competitiveness of businesses, while protecting the integrity of the domestic market.

The maximum funding set by EU regulations depends on the purpose of the project, the size of the company and the part of the country in which the investor is located.

### Adhering to the incentivization principle

Any funding provided by a public-sector body must serve to facilitate a company's business activities or investment programs. Applications must be submitted prior to the investment being made and the project commencing (i.e. before any legally binding commitment is made by the company, such as the signature of a purchase order, a lease, a promise of sale, etc.).

#### The beneficiary must submit an application for funding containing the following information at the very least:

- The name and size of the company.
- A description of the project, its duration and its location.
- A list of the project's costs.
- The type of funding requested and the amount.

## Choosing the right path depending on the purpose of your project

### Government funding programs

The government funding programs in place are broken down according to the purpose of projects (productive investment, research, development, innovation, training, etc.).

- Investing and expanding your business in France.
- Taking over a struggling business in France.
- Supporting your R&D programs and innovative projects.
- Recruiting and training your employees.
- Investing to protect the environment.
- Expanding your startup.

The location (priority development area or otherwise) of the investment and the size

of the company (large company, mid-size company or SME) must also be considered in identifying the government support available.

### Check the size of the funding's beneficiary

Check the size of the funding's beneficiary at group level by consolidating the workforce and results of the companies legally belonging to the group.

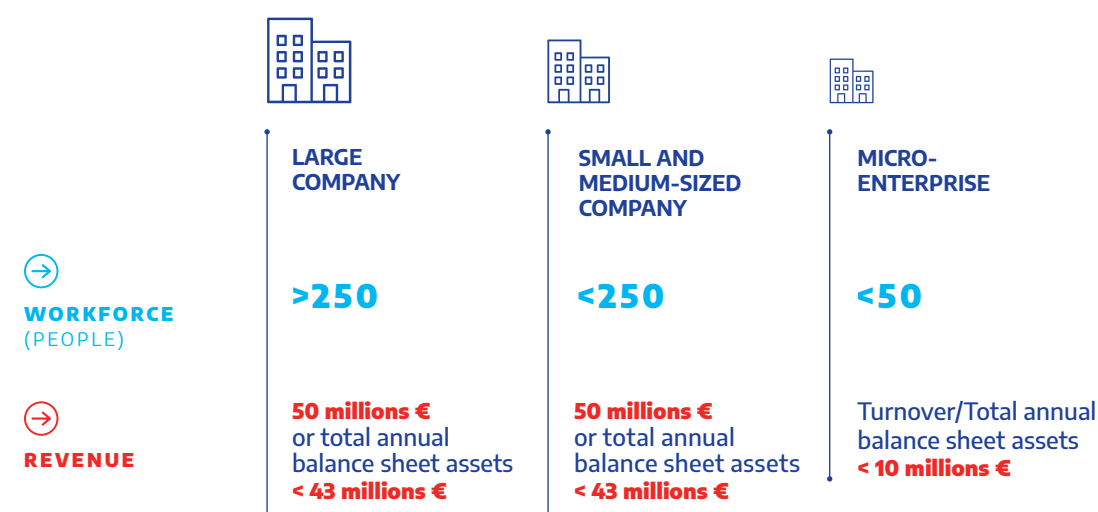
Please refer to the [SME guide](#) published by the European Commission.

## I have a project!

Consult the list of government funding available to businesses [in French only].

This is the definitive database of business funding and support programs. Applicants can search by municipality, according to the nature of their project and their profile.

## WHAT SIZE IS MY COMPANY?



## WHAT FORMS OF GOVERNMENT FUNDING COULD MY PROJECT BE ELIGIBLE FOR?

You become eligible for a whole set of public funding programs in France from the moment you open a legal entity in France and hold a bank account.

### Subvention

#### What is it?

Non-repayable funding that is dependent on the sum invested and the number of jobs created.

#### Which institutions are involved?

- ANCT (National Agency for Territories' cohesion)
- French Environment and Energy Management Agency (ADEME)
- Local authorities (contribution to the PAT, real estate funding)

### Tax exemption

#### What is it?

Tax reductions for business creation and in certain cases where a struggling company is taken over.

#### Which institutions are involved?

- Ministry for the Economy (corporate tax)
- Local authorities (local taxes, subject to local deliberation)

### Repayable advance / Honor loan / Zero-interest loan

#### What is it?

Cash injection making it easier for a company to obtain a bank loan. Does not require a guarantee.

In some cases, the repayable advance becomes a subsidy.

#### Which institutions are involved?

- Businesses Directorate DGE (ARI – business development loan)
- Bpifrance
- Local authorities

### Tax credit

#### What is it?

Tax reduction giving rise to a rebate in the event of a loss.

#### Which institutions are involved?

- Ministry for the Economy
- Ministry for Research
- Ministry for Labor

### Low-interest loans

#### What is it?

Cash injection.

#### Which institutions are involved?

- Bpifrance (Eco-Energy Loan)

### Co-financing and guarantees

#### What is it?

Guarantees to banks to generate leverage.

#### Which institutions are involved?

- Bpifrance

### Capital injection

#### What is it?

Investment in equity.

#### Which institutions are involved?

- French State Investment Fund (CDC)
- Venture capital firms of local authorities
- Bpifrance (SPI fund)

## COORDINATING DIFFERENT LEVELS OF AID







## #5 WHO SHOULD I CONTACT DEPENDING ON MY PROJECT STATUS?



### MATERIAL INVESTMENT

Bpifrance  
DGE (Businesses Directorate)  
Regional authorities



### FINANCING / CAPITAL INJECTION

French State  
Investment Fund (CDC)  
European Investment Bank  
Bpifrance  
Regional funds



### RECRUITMENT & TRAINING

National Employment Office  
Regional authorities  
OPCOs  
(professional development  
joint collection agencies)



### INNOVATE

National Research Agency  
French Environment  
and Energy Management  
Agency (ADEME)  
Bpifrance  
General Secretariat for  
Investment (SGPI)



### RESPOND TO AN INVITATION TO TENDER

General Secretariat for  
Investment (SGPI)  
National Research Agency  
Bpifrance  
French Environment and Energy  
Management Agency (ADEME)



### EXPORTS

Bpifrance  
Business France  
Regional authorities



## #6 RAISING FINANCE ON THE PARIS FINANCIAL MARKETPLACE

With more than 500 financial players, Paris is Europe's leading host of foreign banks and financial institutions.

French banks are among the highest ranked in Europe and the world, with four French banks among the top 20 global players.

Sixty percent of the finance pumped into the economy is provided by banks. Business loans total €978 billion (Banque de France, April 2018).

The vast majority of SMEs are able to access bank finance. Ninety-six percent of SMEs have successfully applied for investment loans. The projects launched by SMEs benefit from favorable interest rates (1.75%, compared with a eurozone average of 2.11%).

French banks offer a wide range of tailored products and solutions that cater for your needs when setting up or expanding operations in France (investments, cash flow, innovation, international flows, etc.).



### Opening a bank account

#### What is the procedure for opening a bank account?

From the moment your company is registered, you can open a business account. Once this is done, you will obtain an RIB (statement of account information), which will facilitate many of your administrative formalities. To open an account, you will need to provide a valid identity document for the legal representative, a company registration certificate dated less than three months prior to the application, your company's articles of association (incorporation), its SIRET registration number and its NAF code.

#### What if your application is rejected?

If a bank rejects your application, you can call upon the Banque de France. The latter will designate a bank responsible for opening an account for you.

[entreprises.banque-france.fr](https://entreprises.banque-france.fr)

Source: French Banking Federation, fbf.fr

## Paris-Euronext

### Expand your business in the heart of the eurozone's largest financial center

Paris-Euronext has the highest equity market capitalization of any European stock exchange with €3.6 trillion (compared with €1.85 trillion for Deutsche Börse) and is also the leading bond market in Europe for non-financial companies with US\$606 billion, ahead of London.

France is at the heart of the European asset management market and has the eurozone's highest concentration of players in the sector. More than 600 specialist companies are established in Paris, and four French companies are among the world's top 20 asset management firms. Funds under management in France total €3.6 trillion (compared with €2.1 trillion in Germany).

Thanks to its entrepreneurial dynamism and an environment conducive to innovation, France has become a choice destination for venture capital. Total funds raised amount to €9.5 billion, compared with €6 billion in Germany.

This performance makes France the eurozone's top financial market for venture capital.

## Bpifrance

Bpifrance works alongside private financial backers to offer priority support to SMEs and mid-size companies, but also to startups and large firms established in France.

From launch to stock market flotation, from loans to equity investments, Bpifrance offers financing solutions tailored to every stage of your company's development.

2019 :

key figures:

- €8.5 billion of guaranteed loans to almost 60 000 VSEs and SMEs
- €8.1 billion of investment loans (+8%)
- €9.3 billion of short-term financing
- €1.3 billion of innovation financing
- €2.5 billion of growth capital and fund of funds investments
- €1.6 billion of cession for 160 deals

source: Bpifrance



### #1 Stock market

Paris is the EU's leading stock market. France is home to 31 of the world's top 500 companies (Fortune Global 500)



### #1 Asset management

Paris tops Europe when it comes to collective asset management (AFG, 2016)

## PARIS, EUROPE'S NEW FINANCIAL CENTER



### EUROPE'S MOST LIQUID MARKET

Narrowest spreads, biggest velocity and lowest volatility  
A liquid government securities market (**€1,500 billion**)



### AN OPEN MARKET

**45 %** of the equity of companies listed on the CAC 40 is owned by foreign investors



### 1<sup>ST</sup> IN CONTINENTAL EUROPE

For forex and interest rate derivatives, well ahead of Frankfurt, and **3rd in the world** for international bonds (49% market share)  
For equity capital raising track record over the past three years



### CONTINENTAL EUROPE'S LARGEST COMMUNITY OF LISTED TECH ISSUERS

**More than 330 listed Tech SMEs**, spanning the digital, cleantech and life sciences sectors

## #7 KEY STAKEHOLDERS



### NATIONAL AGENCY FOR TERRITORIES' COHESION

The ANCT (National Agency for Territories' Cohesion) advises and supports local authorities and their association in the design, definition and implementation of their projects.



### PRIME MINISTER'S OFFICE

The General Secretariat for Investment (SGPI) is responsible for overseeing the Major Investment Plan and implementing France's National Investment Program. It intervenes through calls for projects



### MINISTRY RESPONSIBLE FOR THE ECONOMY

The Businesses Directorate (DGE) is in charge of the competitiveness and the growth of businesses from industry and services.



### PUBLIC ESTABLISHMENT

The National Employment Office helps to target profiles and structure your recruitment and training projects through subsidies (AFPR pre-recruitment training program and POEI operational preparation for individual employment), apprenticeship contracts or professionalization contracts



### COLLECTIVE BRAND LAUNCHED BY THE GOVERNMENT IN 2014

A collective brand for the ecosystem of startups in France aiming to promote French expertise abroad and attract foreign investors.



### PUBLIC ESTABLISHMENT REPORTING TO THE MINISTRY RESPONSIBLE FOR THE ECOLOGICAL TRANSITION AND THE MINISTRY RESPONSIBLE FOR RESEARCH

The ADEME (French Environment and Energy Management Agency) finances projects in various fields: waste management, soil preservation, energy efficiency and renewable energy, circular economy, etc.



### PUBLIC INVESTMENT BANK

Bpifrance supports companies from startups to stock exchange listing, loans to equity capital, accompanying each stage in the life of businesses



### PUBLIC ESTABLISHMENTS REPORTING TO THE MINISTRY RESPONSIBLE FOR SUSTAINABLE DEVELOPMENT

The water agencies provide subsidies or loans to entities undertaking projects that are in the common interest focusing on the balanced management of water resources and the fights against water-based pollution.



### PUBLIC AGENCY REPORTING TO THE MINISTRY RESPONSIBLE FOR RESEARCH

The National Research Agency (ANR) intervenes with calls for projects to fund research projects in France



### FINANCIAL INSTITUTION OF THE MEMBER STATES OF THE EUROPEAN UNION

The European Investment Bank (EIB) provides finance and expertise to support sustainable investment projects that contribute to achieving the main objectives of the European Union in the form of loans, equity investments and guarantees



France's regions are responsible for economic development in their region. They intervene in various ways, offering subsidies, repayable advances, tax exemptions, loans and equity investments.



National central bank which intervenes in the financing of the economy, the management of market infrastructures and the issuance of currency. It can be approached to deposit your share capital and to open a bank account.



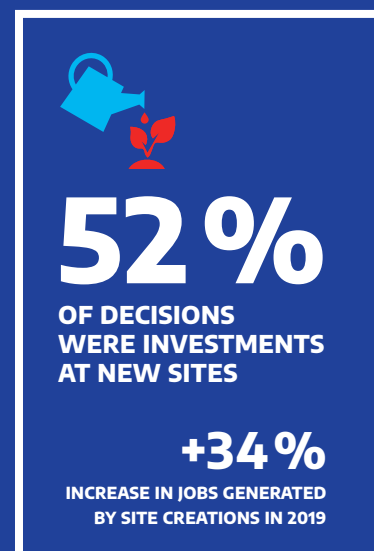
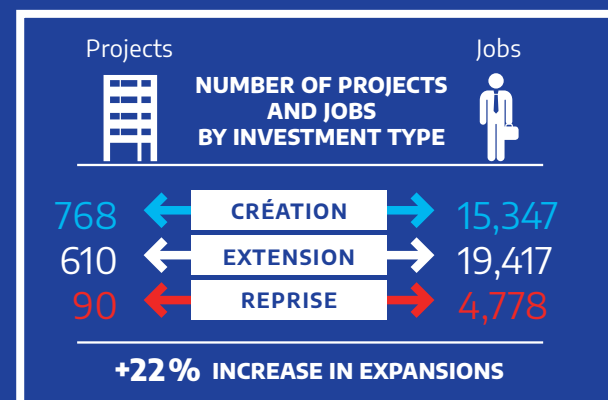
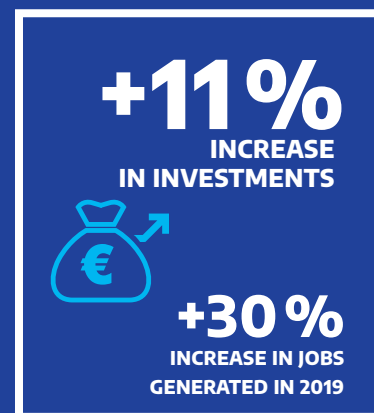
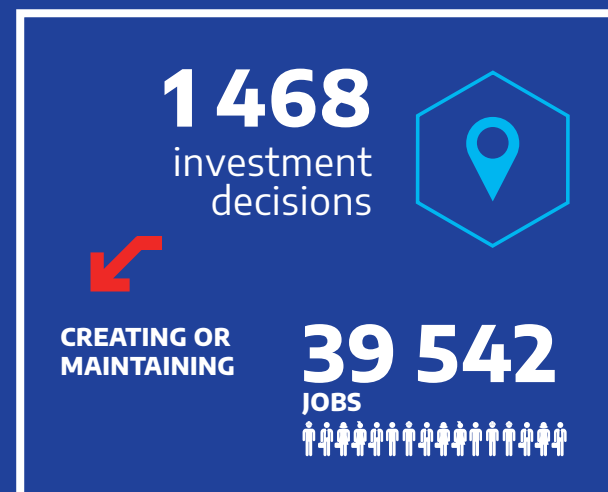
### STATE AGENCY

The CDC is a long-term investor acting in the common interest and in favor of economic development. It finances the growth and innovation of SMEs and mid-size companies in the form of equity investments and/or loans.

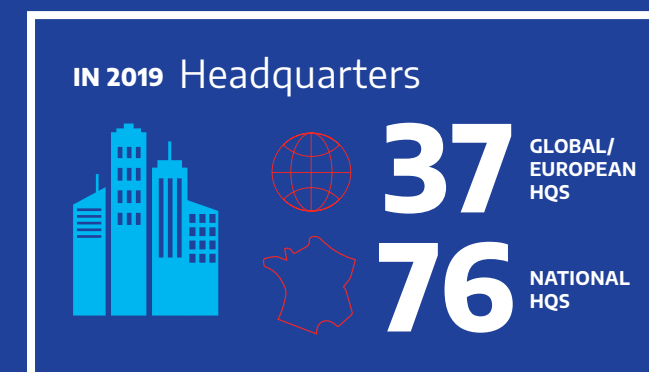
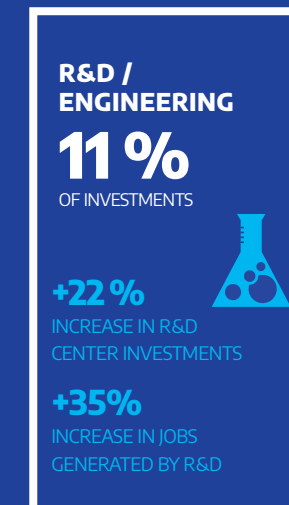
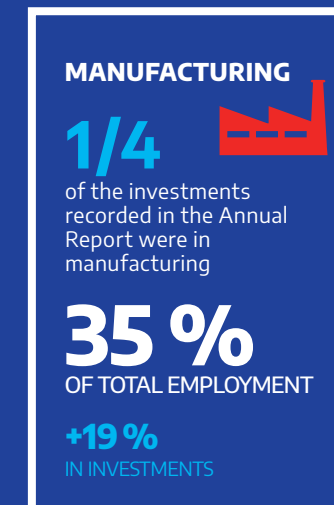
### DISCLAIMER

This guide is provided for information only and cannot replace the advice of a professional. The above information is not exhaustive, and Business France cannot be held liable for omissions or errors. This document may be shared on condition that it is accompanied by all the relevant information and this disclaimer.

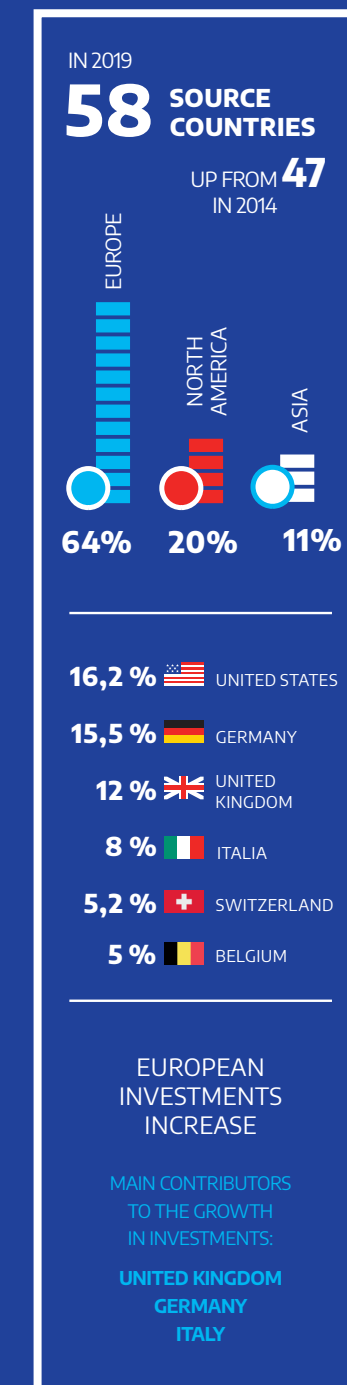
# INVESTIR EN FRANCE



## STRATEGIC INVESTMENTS



## SOURCE OF INVESTMENT PROJECTS



# Support for your investment project



#1 Key figures



#2 Business France support



#3 Support for your investment project  
from public bodies



#4 What are the main types of investment aid?



#5 The Major Investment Plan 2018-2022



#6 Key stakeholders

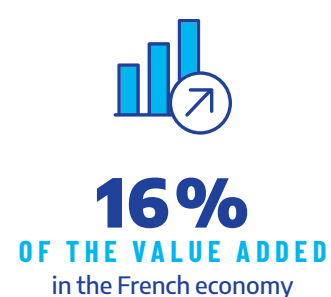
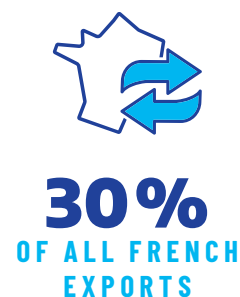


To attract job-creating investment projects to France, the French government and local authorities have developed support tools to localize economic activity nationwide (investment support for businesses).

In addition to this state aid support, investors can also take part in the Major Investment Plan (*Grand plan d'investissement – GPI*) launched by the French government to pursue accelerated ecological transition, the building of a knowledge economy, the anchoring of French competitiveness in innovation, and the construction of the State in the digital era.

## #1 KEY FIGURES

### CONTRIBUTION OF FOREIGN COMPANIES TO THE FRENCH ECONOMY



## #2 BUSINESS FRANCE SUPPORT

Helping you make a success of your project

### ↓ YOUR ACTIONS

**Presenting** your project to  
Business France  
Expressing your needs and  
expectations

**Forwarding** a detailed  
business plan

**Meeting** financial backers  
Presenting your project

**Clarifying** your project  
Making a formal request

**Filing** your request  
Exchanging with the  
appraising body

**Signing** an aid agreement  
Justifying investments  
and jobs created

### ↓ OUR SUPPORT

**Analyzing** your project  
- Targeting aid  
- Informing you of the terms  
and conditions

**Selecting** tools  
- Ensuring the pre-eligibility of your  
project with financial backers  
- Establishing a list of eligible  
expenditure

**Putting** you in touch with  
financial backers  
- Connecting you with  
the right contact people  
- Supporting you during the  
presentation of your project

**Approving** the eligibility of your  
project, thresholds and eligible  
expenditure to be respected

**Processing** your dossier  
Examining the business plan,  
the leveraging of aid,  
and the economic impact

**Assigning** aid and paying  
out funds according  
to the agreed procedures

● Business France and its regional partners

● Public financial backers



## #3 SUPPORT FOR YOUR INVESTMENT PROJECT FROM PUBLIC BODIES

Investment aid is primarily available depending on the location of your project, the size of your business and the number of jobs to be created. Large businesses can therefore obtain investment and job creation support for projects located in specific areas, known as regional aid areas (*zones à finalité régionale – AFR*), whereas SMEs are eligible nationwide. Projects may involve several aid schemes up to the ceiling allowed in the investment zone and in accordance with European Union rules on state aid.

### How do I find out if the municipality allows for investment aid to be obtained?

#### Where can I find where regional aid areas are located?

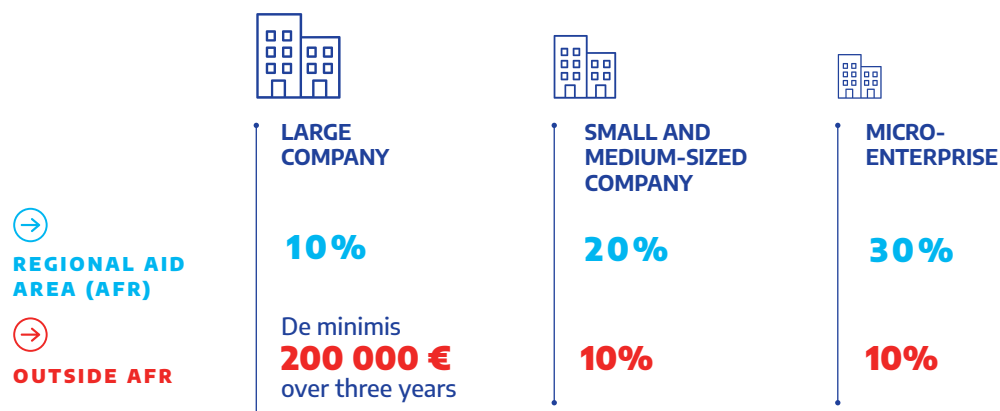
An interactive map is at your disposal at the Observatoire des territoires to identify municipalities (*communes*) where investment

aid may be awarded by a public body, and what the maximum intervention rate would be.

Interactive map: [carto.observatoire-des-territoires.gouv.fr](https://carto.observatoire-des-territoires.gouv.fr)

### Identify, secure, connect

Based on an evaluation of your project (nature and amount of investment, economic impacts, job creation, calendar for investment), Business France defines with you, in coordination with national players and regional partners, which state aid schemes can be called upon (tools, nature, intensity, ceiling) to support the development of your projects nationwide. Business France helps you secure the different criteria and eligibility thresholds, calendars and arrangements of the application process and puts you in touch with the relevant parties.



## #4 WHAT ARE THE MAIN TYPES OF INVESTMENT AID?



### NATIONAL TOOLS

#### Companies with industrial projects (SPIs)

##### Bpifrance

A minority stake in a new company

Ticket €10 millions to €160 millions

#### Deposits and Consignments Fund (CDC)

The CDC favours a responsible, prudent and long term investment approach and takes minority stakes in companies alongside local authorities (SEM) or private investors (project companies).

#### Employment and professional development aid

National Employment Office



### SUPPORT FROM LOCAL AUTHORITIES

#### Real estate investment

Support for expansions or new projects: purchase of land, construction or expansion of buildings, etc.

#### Material investment

Aid to finance the acquisition of machines, a new chain of production, an industrial IT system, etc.

#### Tax exemptions

After deliberation from local authorities

#### Employment and professional development aid

Notification threshold to the European Commission: €7.5 million



## WHAT ARE THE THRESHOLD CONDITIONS AND LIMITS?

### **SPI funds – Société de projets industriels (society of industrial projects)**

**Contact:** Bpifrance

**Nature:** Minority shareholdings in project companies (new industrial companies)

**Goal:** To support industrialization projects

**Budget:** €800 million in the form of equity and quasi-equity investments

**Eligibility:** Any size of business

**Amount:** Ticket from €10 million to €160 million

**Threshold:** Support for manufacturers including a share in case (of at least one-third)

**Duration:** Five years

**Ceiling:** Wise minority investment

**Examination:** Bpifrance

### **Deposit and Consignments Fund (CDC)**

**Contact:** CDC's Regional Directorate

**Nature:** Minority shareholdings in real estate project companies

**Budget:** Depends on the project

**Eligibility:** Company from any sector establishing on the national territory

**Eligible amount:** Property and buildings

**Ceiling:** maximum 30% of eligible costs

**Instruction:** CDC

### **Pre-recruitment training – AFPR and POEI**

**Contact:** Pôle emploi

**Nature:** Financial aid (not reimbursable)

**Goal:** To reduce the gap between the skills of new recruits and the demands of the jobs targeted

**Target:** People registered with Pôle Emploi

**Eligibility:** Any company size from any sector

**Amount:** Maximum aid of €5 net per hour of internal training, up to €2,000. Maximum aid of €8 net per hour of external training, i.e. up to €3,200 for 400 hours of training.

#### **Conditions :**

- Fixed-term contract of between six and 12 months
- Fixed-term professionalization contract
- Temporary work contract, if the missions take place for at least six months during the nine months following the training course.

**Examination:** Pôle Emploi

### **Local authority aid**

**Contact:** Local authorities

**Nature:** Subsidies, investment support, additional PAT financing, real estate investment, training aid, etc.

**Eligibility:** Businesses from any sector; any size of business

**Ceiling:** 10% of eligible costs, SMEs 20%, large businesses 10%

**Examination** By the local authority

### **Tax exemptions from corporate property contribution (CFE)**

**Contact:** Tax4Business, local authorities

**Nature:** Exemption from corporate property contribution (cotisation foncière des entreprises – CFE) in regional aid areas

**Eligibility:** Businesses from manufacturing sectors; any size of business

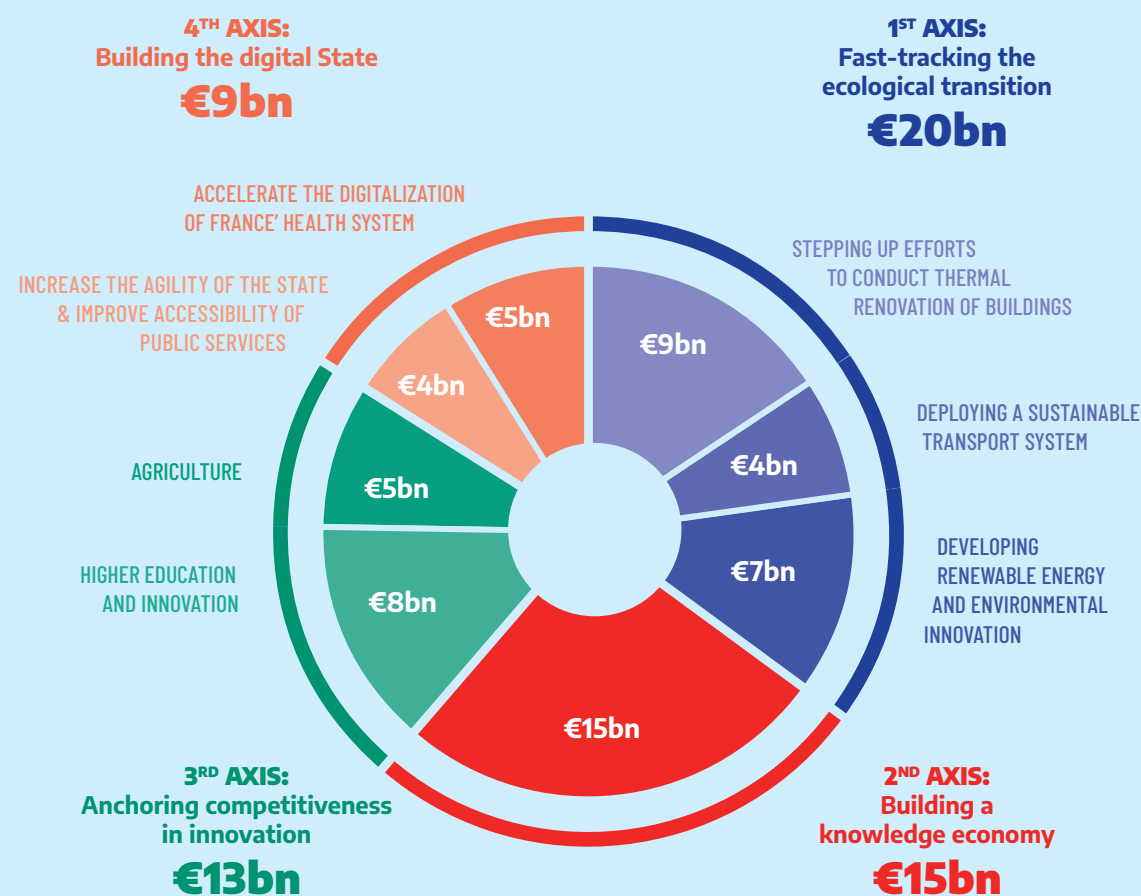
**Duration:** Two to five years

**Ceiling:** Regional aid (AFR)

**Examination:** Depending on deliberation of the local authority



## SUMMARY OF MAJOR INVESTMENT PLAN INVESTMENTS



Source: General Secretariat for Investment (SGPI)



## #5 THE MAJOR INVESTMENT PLAN 2018-2022

### What does it involve?

The French government has committed itself to a €57 billion Major Investment Plan (*Grand plan d'investissement – GPI*) to support structural reforms over the current five-year term and to respond to the four major challenges facing France: fast-tracking the ecological transition (€20 billion), building a knowledge economy (€15 billion), anchoring competitiveness in innovation (€13 billion) and building the digital economy (€9 billion).

These four priority axes are divided into 25 initiatives.

- The activation or redirection of existing investments to best serve the priorities of the Major Investment Plan (€12 billion).
- New budgetary measures to finance the priorities of the Plan (€24 billion).
- The financing for the third part of the National Investment Program to support progress in teaching and research, harness research, and fast-track the modernization of businesses (€10 billion).

### Who?

For each initiative, a minister will be responsible for its implementation and management. The General Secretariat for Investment (*Secrétariat général pour l'investissement – SGPI*) is responsible for coordinating and following up the Major Investment Plan and implementing the National Investment Program (*Programme d'investissements d'avenir*).

### What initiatives will be made as part of the GPI?

#### The Major Investment Plan draws on:

- Financial initiatives, such as loans, equity or guarantee funds (€11 billion), led in particular by the CDC (the French State Investment Fund, *Caisse des dépôts et consignations*).



## #6 KEY STAKEHOLDERS

**ANCT**  
cohesion-territoires.gouv.fr

**DGE**  
entreprises.gouv.fr/dge

**PÔLE EMPLOI**  
pole-emploi.fr

**BPIFRANCE**  
bpifrance.fr

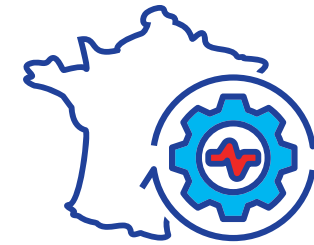
**TAX4BUSINESS**  
impots.gouv.fr

**RÉGIONS DE FRANCE**  
regions-france.org

#### DISCLAIMER

This guide is provided for information only and cannot replace the advice of a professional. The above information is not exhaustive, and Business France cannot be held liable for omissions or errors. This document may be shared on condition that it is accompanied by all the relevant information and this disclaimer.

# Choose France as a venue for takeovers



Taking over a business, either in good health or bad, requires preparation and support from specialist professionals. Taking over a business in bad health may be supported by the public authorities using a variety of state aid measures.

-  **#1** Key figures
-  **#2** Business France support
-  **#3** Investment opportunities
-  **#4** Preparing to restart an activity
-  **#5** What are the main schemes?
-  **#6** Key stakeholders



## #1 KEY FIGURES

Business transfers  
in France (2016)



**60,000**

**BUSINESSES**

on sale



**185,000**

**BUSINESSES**

to be sold each year or  
750,000 jobs safeguarded



**50%**

**OF BUSINESSES**

wound-up due  
to there being no buyer



However,

**60%**

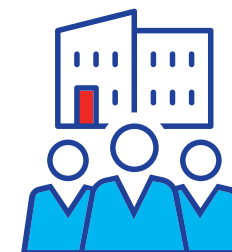
**SURVIVAL RATE  
OF BUSINESSES**

recently sold



**A POSITIVE  
CORRELATION**

can be observed between  
the dynamism of the rate of  
business sales in local areas  
and the dynamism of its local  
economy



According to a study by the BPCE  
Observatory, 80% of business  
sales every year in France involve  
micro-enterprises employing a total  
of 143,000 people.

The 15,000 sales of SMEs and mid-size  
companies involved 1.1 million jobs –  
including 450,000 working for SMEs.



## #2 BUSINESS FRANCE SUPPORT

Identify – Secure – Connect

### ✓ Identify

Business France and its partners regularly share information about investment opportunities in France on its website and around its network. From takeovers of ailing businesses, investment in growing businesses (startups, SMEs) or in the French Tech ecosystem (incubator, accelerators, innovation clusters), we can present you with opportunities corresponding to your business sector.

Moreover, there are investment opportunities in terms of acquiring equity stakes in equipment, infrastructure, or key real estate (Grand Paris, airports, etc.).

### ✓ Secure

Based on an evaluation of your project (targets sought, nature and amount of investment, economic impacts, job creation or job saving, calendar for investment), Business France helps you understand the takeover procedure in strict compliance with the confidentiality of your project.

### ✓ Connect

Business France and its partners puts you in touch with relevant players to help you identify targets and produce the information you need to take decisions.

## KEEPING YOU INFORMED OF INVESTMENT OPPORTUNITIES

### ↓ VOS ACTIONS

**Presenting** your takeover project to Business France  
Expressing your needs and expectations

**Forwarding** and signing the confidentiality agreements to access the data room and specifying my takeover offer

**Exchanging** with the people and financial backers involved in the takeover

- Checking if a takeover authorization is required (*sensitive sectors and business concentrations*)
- Presenting my takeover project

**Undertaking** due diligence

- Outlining my takeover project
- Asking to receive state aid

**Formulating** my takeover bid after obtaining authorization if appropriate

**Acquiring** the business and filing my state aid requests

### ↓ THE MAIN STAGES

**Targeting** the investment opportunities

- Analyzing your investment project

**Informing** yourself on the takeover procedure

- The stages of the takeover
- Eligible state aid

**Getting** in touch

- With the relevant parties (business to be taken over, administrators, specialist consulting firms)
- With financial backers

**Getting** information about the economic and social situation of the business being taken over

- Checking the eligibility of state aid requests

**Examining** the takeover offer by the tribunal or by the business

- Auction sale or transfer

**Following up** the transfer plan

● Business France ● Takeover players



## #3 INVESTMENT OPPORTUNITIES

### Insolvency proceedings and taking over ailing businesses: what do they involve?

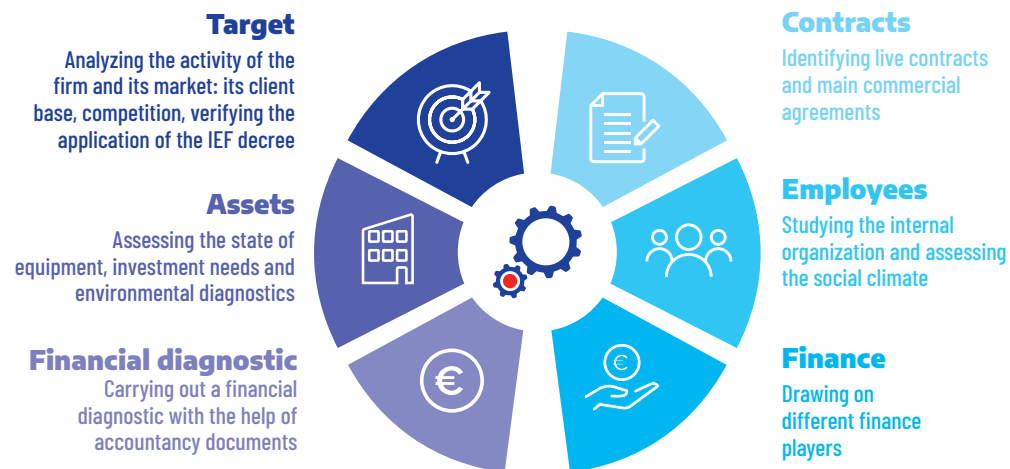
Takeovers of over ailing sites aim to maintain all or part of an activity and jobs, as well as wiping out debts accrued by the targeted company. Investors must be able to carry out a detailed diagnostic of the company to be taken over (due diligence) so as to provide the best assessment of the risks inherent in proceeding with the operation.

As part of the bankruptcy protection procedures, the court decides on external

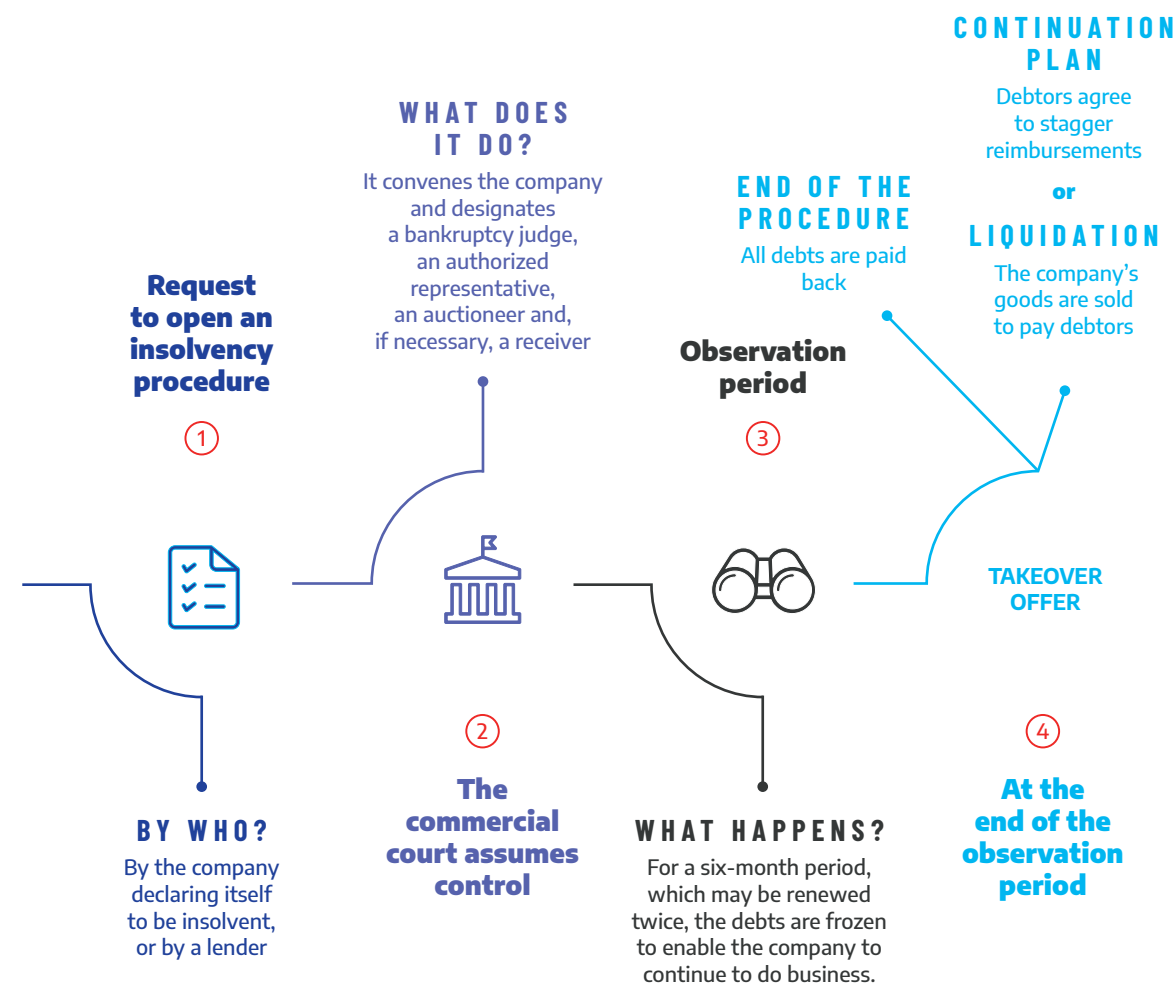
takeover projects coming from third parties who have submitted offers and chooses the offer that best fits the sustainability of the business, continued employment and settlement of liabilities.

The takeover offer made by the buyer must notably include the precise description of goods, rights and contracts included in the offer, forecasts for activity and financing, the price offered, the capacity of capital contributors, the level and prospects for employment justified by the business being considered, the guarantees obtained with a view to going through with the takeover, and the duration of each of these engagements made by those making the takeover.

#### WHAT IS DUE DILIGENCE?



### HOW DO YOU TAKE OVER AN AILING BUSINESS?





## #4 PREPARING TO RESTART AN ACTIVITY

Supporting your takeover

### What does it involve?

#### The control of foreign investments in France

Am I affected?

Some takeover operations made in so-called “sensitive” sectors are subject to prior authorization by the government minister responsible for the economy. This authorization is given within a two-month timeframe from when the request is received by the minister for the economy. If no response is given, tacit approval may be considered.

The transactions considered concern the acquisition of control, the acquisition of all or part of a business line, or the crossing of the threshold of 33.33% of the capital or voting rights.

### What are the main sectors involved?

Public security, public order and defense, transport, water and energy supplies, electronic communications, public healthcare

and vital activities such as those defined in the defense code. Also affected are businesses in the aerospace and civil protection sectors, or those leading research and development activities involving cybersecurity, artificial intelligence, robotics, the manufacture of additives, and semi-conductors.

### What aid exists for takeovers?

The French government and local authorities have introduced a number of financial aid schemes for those who take over a business so as to provide support for company takeovers of ailing firms. This aid enables the takeover costs to be reduced and applies according to different criteria, particularly the exact location (regional aid areas) and the type of business acquired.

Some regions offer finance for takeovers of ailing SME assets if jobs are maintained.



## #5 WHAT ARE THE MAIN SCHEMES?



### MESURES NATIONALES

#### Solidarity fund

A solidarity fund is implemented to support company affected by the consequences of the Covid 19 pandemic and by the lockdown measures.

#### Exemption from corporate tax

For two years

#### Regeneration funds

Finance for the development of businesses in the struggling employment area

#### Loan and guarantee

#### Bpifrance

Growth loan  
Growth guarantee



### AID FROM LOCAL AUTHORITIES

#### Exemption from local taxes


After deliberation  
by local authorities

#### Real estate aid

#### Aid for the retention of employees

#### Aid for employment and professional training



 Schemes capped by regional aid area and company size

## WHAT ARE THE THRESHOLD CONDITIONS AND LIMITS?

### Tax exemptions for the takeover of an industrial business in difficulty

**Nature:** Corporate tax exemptions for two years and/or exemption from local taxes (for up to five years after deliberation by the local authorities)

**Target:** The company having been ordered by a tribunal as part of insolvency protection to sell some or all of its business, or is in bankruptcy protection or liquidation. An industrial activity

**Exclusion:** Of transport activities, making of synthetic fibers, steel industry and fishing

**Eligibility:** A company created before December 31, 2020 to take over an ailing business (corporate tax exemption for two years)

**Ceiling:** Varies according to the size of the business and where it is located (for example, it is increased for SMEs within a regional aid area). Businesses receiving this exemption may also benefit from **an exemption from the corporate property contribution (CFE), the contribution on business value-added (CVAE) and property tax on developed property (TFPB)** for a duration of between two and five years.

**Examination:** Corporate tax office (Service des impôts des entreprises)

### Using the research tax credit – Bpifrance

**Nature:** A cash advance within the R&D program authorizing a research tax credit

**Eligibility:** A mid-size company (ETI) or large business subject to corporate tax

**Amount:** 80% of the amount outstanding (minimum: €30,000)

**Financial conditions:**  
Commitment fee calculated on the amount authorized.  
Interest on advances used  
Administrative fee and technical expertise

**Examination:** Bpifrance (regional offices)

### Bpifrance growth loan

**Nature:** Unsecured loan

**Goal:** To secure your immaterial investments and strengthen your working capital requirement

**Eligibility:** SMEs and independent mid-size companies (ETIs)

**Amount:** €300,000 to €5,000,000 at a fixed or variable rate limited by your business' equity capital and quasi equity capital

**Duration:** Seven years, including 24 months of deferred capital repayment

**Access conditions:** In partnership with your bank, at a rate of 1 euro of growth loan for 1 euro of support loan, or own funding

**Examination:** Bpifrance (regional offices)

### Solidarity fund

**Contact:** Tax office

**Nature :** provision of financial aid to businesses which activity has been particularly affected by the consequences of the Covid 19 pandemic.

**Amount:** €7 billion

**Eligibility:** businesses, organisations, self-employed, microentrepreneurs, liberal professions, farmers, members of a GAEC, artists and authors

#### Access conditions:

The company must not be under a judicial liquidation procedure as of March 1, 2020

- Employees must not be more than 10 (if the company controls other companies, this rule applies to all the companies)

- The company must not be under the control of a commercial company

- The company must have its tax residence in France  
l'entreprise doit avoir sa résidence fiscale en France

**Duration:** the fund will operate until December 31st, 2020

#### Amount:

For a loss of turnover greater or equal to 1.5K€, the company benefits from an aid of 1.5K€

For a loss of turnover inferior to 1.5K€, the company benefits from aid equal to the loss

**Examination:** apply online at [impot.gouv.fr](http://impot.gouv.fr) on July 31st, 2020 at the latest

## #6 KEY STAKEHOLDERS

**ANCT**  
[cohesion-territoires.gouv.fr](http://cohesion-territoires.gouv.fr)

**Businesses Directorate (DGE)**  
[entreprises.gouv.fr/dge](http://entreprises.gouv.fr/dge)

**Treasury Directorate (DGT)**  
[tresor.economie.gouv.fr](http://tresor.economie.gouv.fr)

**French State Investment Fund (CDC)**  
[caissedesdepots.fr](http://caissedesdepots.fr)

**BPI FRANCE**  
[bpifrance.fr](http://bpifrance.fr)

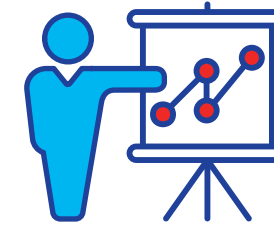
**REGIONS OF FRANCE**  
[regions-france.org](http://regions-france.org)

#### DISCLAIMER

This guide is provided for information only and cannot replace the advice of a professional. The above information is not exhaustive, and Business France cannot be held liable for omissions or errors. This document may be shared on condition that it is accompanied by all the relevant information and this disclaimer.

# Recruiting and training your employees

-  **#1** Key figures
-  **#2** Business France support
-  **#3** Reform to workplace training and apprenticeships
-  **#4** What are the main schemes?
-  **#5** Key stakeholders



France has a wide, effective system of workplace training. Access for all employees to workplace training and apprenticeships guarantees the availability of a qualified, versatile workforce.

As a cornerstone of French government policy, reform to workplace training and apprenticeship schemes will profoundly transform the French model guided by a twofold aim: adopting effective tools to fight against unemployment; and preparing for the future by making social democracy brighter, livelier and more legitimate.

To achieve these aims, the French government and public-sector organizations have different financial support tools to encourage businesses to create jobs and train their staff.





## #1 KEY FIGURES

France, a talent pool!



**1 million**  
**engineers**

**75,000 PHDS**  
(41 % of foreign-national)

**278,000 students enrolled**  
**in higher education**

**38,000 graduate engineers every year**



**#3**

**in Europe for R&D**  
**staff availability**

Number of students in PhD grade  
(Eurostat, 2014)



**#4**

**in the world**  
**for R&D staff**

**Per 1,000 workers**  
After Finland, Sweden and Austria  
(OCDE 2014)



## #2 BUSINESS FRANCE SUPPORT

Helping you make a success of your project

### ↓ YOUR ACTIONS

**Presenting** your project  
to Business France  
Expressing your needs  
and expectations

**Forwarding** a detailed  
business plan

**Meeting** financial backers  
Contacting your skills  
operator

**Clarifying** your project  
Making a formal request

**Filing** your request  
Exchanging with the  
appraising body

**Signing** an aid agreement  
Justifying investments and  
jobs created

### ↓ OUR SUPPORT

**Analyzing** your project  
- Targeting aid  
- Informing you of the terms  
and conditions

**Selecting** tools  
- Ensuring the pre-eligibility  
of your project with financial  
backers  
- Establishing a list  
of eligible expenditure

**Putting** you in touch with  
financial backers  
- Connecting you with the  
right contact people

**Approving** the eligibility  
of your project, thresholds  
and eligible expenditure  
to be respected

**Processing** your dossier

**Assigning** aid and paying  
out funds according to the  
agreed procedures

● Business France ● Business France partners



## #3 REFORM TO WORKPLACE TRAINING AND APPRENTICESHIPS

### France faces multiple challenges

Today, an hour's training for a cadre is generally more expensive than for an employé or ouvrier. To give fairer access, the personal training account (CPF) is drawn up in euros.

- Investing massively in training and skills, to be collectively capable of provoking change in the knowledge economy.
- Giving everyone the freedom to choose their professional future and the ability to build their own career path.
- Protecting the most vulnerable in society against the lack and the rapid obsolescence of expertise, and winning the battle against mass unemployment.

### What does it involve?

By 2019-2020, all employees in France will see their personal training account (*Compte personnel de formation – CPF*) credited with €500 per year to freely choose training courses.

Within 10 years, the CPF will reach its ceiling of €5,000, to which an employer contribution may be added.

The CPF may be contributed to businesses and branches, particularly through collective agreements.

The CPF is therefore reinforced as a personal right collectively guaranteed.

For employees without qualifications, rights will be increased, and the CPF will be credited with €800 per year, up to €8,000 in all, to fund occupational retraining.

An investment plan in skills will be introduced worth a total of €15 billion.

### EXAMPLE TRAINING COURSES

All the training courses can be accessed through the CPF as part of a certification.

	TRAINING	AMOUNT
€800	<b>TOEIC</b> (Test Of English for International Communication)	Around €800
	<b>TOSA</b> (Certificate of IT literacy)	Nearly €600
	<b>Forklift Truck Driving Certificate CACES R389</b>	Nearly €800
€5,000	<b>Family Life Assistant</b> (level V)	Nearly €5,000
	<b>Website Developer</b>	Nearly €5,000
	<b>Public Works Team Leader</b>	Nearly €5,000
€8,000	<b>Fashion designer</b> (level V)	Nearly €7,000
	<b>Upholsterer</b> (level V)	Nearly €7,500
€10,000	<b>Fitter for heating</b> air conditioning, plumbing and renewable energy (level V)	Nearly €10,000

Source : Ministry for Labour



## #4 WHAT ARE THE MAIN SCHEMES?



### NATIONAL TOOLS

#### Reduced employer social security contributions

##### Urssaf

#### Pôle Emploi support

Pre-recruitment training program (*Action de formation préalable au recrutement – AFPR*)

Operational readiness for employment (*Préparation opérationnelle à l'emploi individuelle – POEI*)

From €5 to €8 per hour of training, up to 400 hours per employee



### LOCAL AUTHORITY AID

#### Training and employment aid

Local authorities can back certain national initiatives.

#### Skill operators

Accredited fund-collecting agencies can offer supplementary finance to that offered by Pôle Emploi, as well as launch sector programs.



#### DISCLAIMER

This guide is provided for information only and cannot replace the advice of a professional. The above information is not exhaustive, and Business France cannot be held liable for omissions or errors. This document may be shared on condition that it is accompanied by all the relevant information and this disclaimer.

## WHAT ARE THE THRESHOLD CONDITIONS AND LIMITS?

### Pre-recruitment training – AFPR et POEI

**Nature:** Grant up to 400 hours before taking on the post

**Goal:** To reduce the gap between the skills of new recruits and the demands of the jobs targeted

**Target:** People registered with Pôle Emploi

**Eligibility:** Any business size from any sector

#### Amount:

- For an internal training course (in the company): €5/hour up to €2,000
- For an external training course: €8/hour up to €3,200

#### Conditions:

- AFPR : fixed-term contract of between six and 12 months, fixed-term professionalization contract, or temporary work contract for missions of at least 6 months.
- Operational readiness for employment (*Préparation opérationnelle à l'emploi individuelle – POEI*) permanent contract or fixed-term contract of less than 12 months

**Contact:** Pôle Emploi

### Reduction in employer social security contributions

**Nature:** Reduction in social security contributions

**Goal:** To restore growth and employment

**Eligibility:** Any business size from any sector

#### Amount:

- For three years:
- Zero URSSAF contributions on statutory national minimum wage (SMIC)

- Reduction in employer social security contributions on salaries lower than 1.6 times the statutory national minimum wage
- Reduction of family allowance rates up to 3.5 times the statutory national minimum wage
- Exemption from employer social security contributions for five to seven years following investment in specific areas (employment priority areas, urban enterprise areas, overseas)

### Subsidized employment scheme

**Nature:** Bonus paid to employer

**Goal:** To fight unemployment in 194 priority districts (1.4 million inhabitants and 200,000 jobseekers) and against trends to discriminate when hiring

**Eligibility:** Any business size, any sector

#### Amount:

- For fixed-term contracts (six months and over): €2,500 per year for two years (amounts in accordance with working hours (part-time) and the contract duration)
- For permanent contracts: €5,000 a year for three years

#### Conditions:

- To be registered with Pôle Emploi, without restriction for age or level of qualification.
- To live in a priority district under the town's policies.
- To sign a contract before December 31, 2020 with a business or association.

**Contact:** Ministry for Regional Cohesion and Pôle Emploi



## #5 KEY STAKEHOLDERS

**PÔLE EMPLOI**  
pole-emploi.fr

**REGIONS OF FRANCE**  
regions-france.org

**MINISTRY FOR REGIONAL COHESION**  
cohesion-territoires.gouv.fr

# Support for your R&D programs and innovative projects



#1 Key figures



#2 Business France support



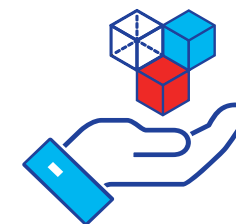
#3 Support for research and development and innovation



#4 What are the main schemes?



#5 Key stakeholders



France is Europe's most attractive country in terms of its research tax credit (CIR) and effective tax rate for R&D activities.

Thirty percent of eligible expenses are refundable up to a limit of €100 million, and 5% for amounts above this limit. (2016 research tax credit budget: €5.4 million.)

France is ranked first in Europe for its share of institutions featuring among the world's top 100 innovators with 13 Fields medalists (France is ranked second in the world).

In 2015, gross domestic expenditure on research and development (GERD) amounted to €49.8 billion.

Foreign companies have increased their R&D spending in France by 9% per year since 2007.



## #1 KEY FIGURES



The United Kingdom went from having 100 R&D centers to 63

**-37**  
R&D centers



France went from having 45 R&D centers to 51

**+6**  
R&D centers

### TOP FIVE ADVANTAGES OF FRANCE



1

Capacity for innovation and research



2

Tourism outreach



3

International accessibility and infrastructures



4

Ability to support entrepreneurship



5

Reforms to boost competitiveness



**2,24% of GDP**  
spent on research and development



**578,000**  
researchers  
and support staff



**14,500**  
doctorates  
awarded  
each year



**4<sup>th</sup>**  
in the world  
For patenting  
(6.3% of applications registered)



**7<sup>th</sup>**  
in the world  
for its scientific  
publications

## ✓ Identify

State aid in France for innovation is available at all levels of the production chain, from the creation of an ecosystem for the development of innovative companies to the financing of projects.

Whether you need a tax credit, subsidy, loan or repayable advance, Business France and its national and regional partners will show you what support systems are in place for R&D and innovation to help you carry out your ambitious projects.

## ✓ Secure

Working with the network of organizations and experts approved by the Ministry for Higher Education, Research and Innovation, Business France will help you to determine whether your R&D and innovation projects are eligible for support from state aid schemes.

## ✓ Connect

Business France facilitates contact with the Ministry for Higher Education, Research and Innovation, the National Research Agency and Bpifrance. It also coordinates exchanges between the different national and local levels to support your R&D programs and your innovative projects.

## HELPING YOU MAKE A SUCCESS OF YOUR PROJECT

### ↓ YOUR ACTIONS

**Presenting** your project  
to Business France  
Expressing your needs  
and expectations

**Forwarding** a detailed  
business plan

**Meeting** financial backers  
Presenting your project

**Clarifying** your project  
Making a formal request

**Filing** your request  
Exchanging with the  
appraising body

**Signing** an aid agreement  
Justifying investments and  
jobs created

### ↓ OUR SUPPORT

**Analyzing** your project  
- Targeting aid  
- Informing you of the terms  
and conditions

**Selecting** tools  
- Ensuring the pre-eligibility  
of your project with financial  
backers  
- Establishing a list  
of eligible expenditure

**Putting** you in touch with  
financial backers  
- Connecting you with the  
right contact people  
- Supporting you during the  
presentation of your project

**Approving** the eligibility  
of your project, thresholds  
and eligible expenditure  
to be respected

**Processing** your dossier  
Examining the business plan,  
the leveraging of aid,  
and the economic impact

**Assigning** aid and paying  
out funds according to the  
agreed procedures



## #3 SUPPORT FOR RESEARCH AND DEVELOPMENT AND INNOVATION

### Support for R&D

France has a wide range of state aid schemes for R&D and innovation to provide you with an appropriate response to each type of project (breakthrough innovation, industrial research, etc.), the degree of maturity of your project, and any financing issues. Aid for R&D projects is available throughout the country and can cover a large amount of staff costs, R&D equipment, contract research costs, technical knowledge, patents purchased and overhead costs.

The very definition of R&D is a broad one, a term that can mean supporting various projects ranging from industrial research to experimental development through to technological partnerships.

#### THE INNOVATION FUND

**Aim:** As part of the government's strong focus on innovation, in January 2018 a fund was created through the French public investment bank, Bpifrance.

**Amount:** €10 billion.

**Mission:** Invest in breakthrough innovations and foster their industrialization in France.

**Main targets:** Companies, who will be eligible for large amounts of aid.

**Contact:** Bpifrance

### Support for digital technology

Bpifrance has developed a very simple tool to assess your level of "digital maturity" before launching your digital transformation project. All you need to do is click on the following link to create an account:  
[mon.bpifrance.fr/mon-espace/#/login](https://mon.bpifrance.fr/mon-espace/#/login)

#### DIGITAL AMBITION FUND

**Aim:** Fast-track startups' growth and help to create French digital champions.

**Nature:** Investment in equity or quasi-equity in digital companies, alongside private co-investors.

**Targets:** Companies with high-growth potential, developing innovative technologies or deploying new products / services or innovative business models, with the aim of becoming a leader in their market.

**Investment areas:** Software, the internet of things, products / hardware, AI and new digital uses.

**Thresholds:** Between €1 and €10 million.

As at December 31, 2017, after six years of activity, the Digital Ambition fund had invested up to €182 million in 39 startups.

**Contact:** Bpifrance



## #4 WHAT ARE THE MAIN SCHEMES?



### GENERAL MEASURES

#### Research tax credit

30% of R&D expenses up to €100 million and 5% above this reimbursed or paid through corporate tax

#### Innovation tax credit

20% of expenses up to €400,000 per year reimbursed or paid through corporate tax

#### Innovative new company status

Tax and social benefits for innovative startups



### AID FOR PROJECTS

#### Grants, interest-free loans, repayable advances

Awarded by local authorities

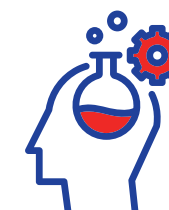
#### Bpifrance aid


Finance from 25% to 60% of the R&D budget:

Interest-free loans  
Grants

#### Calls for projects

Innovation clusters  
National Research Agency  
Sectoral aid  
European aid  
Horizon 2020



 Schemes capped from 25 to 100% of total eligible expenses according to the technology stage (experimental development, industrial research, basic research)



## WHAT ARE THE THRESHOLD CONDITIONS AND LIMITS?

### Innovation development loan (*Aide pour le développement de l'innovation*)

**Contact:** Bpifrance regional authorities

**Aim:** Any independent or collaborative research, development and innovation (RDI) project, aimed at developing innovative products, processes or services with significant prospects for industrialization and commercialization

**Target:** SMEs and companies with fewer than 2,000 employees

**Amount:** Repayable advance or interest-free loan up to €3 million. Assistance offered by Bpifrance may vary depending on the characteristics and progress of the project, the level of risk, the company profile, or the actual incentiviveness of the aid (aid rate of between 25-65%, according to the total eligible expenditure base)

### Industry Growth Loan

**Contact :** Bpifrance regional authorities

**Aim:** Carry out an investment program with a high economic impact that creates jobs and includes immaterial expenditures and needs for working capital.

**Target:** SMES and mid-size companies over three years old

**Amount:** €500,000 to €5,000,000  
The loan must be associated with external financing, at the rate of one to one, up to the limit of the company's equity and quasi-equity

**Duration:** Seven years, including a grace period of two years

**Guarantee:** No security on the assets of the company, nor on those of the company director, only a 5% guarantee deduction is expected. This deduction is refunded after reimbursement of the loan and increased of the interests earned.

### Tax relief for innovative new companies (*Jeune entreprise innovantes – JEIs*)

**Contact:** General Tax Directorate, who will issue an official declaration

**Aim:** Tax status enabling young SMEs to finance their R&D activity

**Target:** SMEs under eight years old created from scratch, before December 31, 2022

**Amount:**

- 100% corporate tax exemptions for the first financial year and 50% thereafter within the agreed ceiling
- Exemption for eight years from certain employers' mandatory social security contributions (sickness, old age, family allowances, etc.)
- May be combined with the research tax credit

**Conditions:** Companies for whom R&D expenditure equates to at least 15% of total expenditure per financial year, are more than 50% owned by private individuals or by investment funds, and are a SME under eight years old created from scratch

### Industrial agreements for training through research (*Convention CIFRE*)

**Contact:** National Association for Research and Technology (ANRT)

**Nature:** Grant

**Aim:** Hire a PhD student to be at the heart of a research partnership with a public laboratory

**Target:** All industry sectors, companies of all sizes

**Conditions:** The company recruits someone with a Master's degree on a fixed-term (CDD) or permanent (CDI) contract to carry out strategic research. The doctoral salary is eligible for the research tax credit

**Amount:** €14,000 every year for three years.

**Procedures:** Declaration to be filed at the corporate tax department

### Research tax credit (*Crédit d'impôt recherche – CIR*)

**Contact:** Ministry for Higher Education and Research

**Aim:** Facilitate the financing of R&D operations carried out in France

**Target:** All industry sectors, companies of all sizes

**Amount:** Tax credit of 30% of annual research expenses (50% in the overseas regions of Guadeloupe, French Guiana, Martinique, Reunion and Mayotte) up to a maximum limit of €100 million, and 5% beyond this limit

**Procedure:** Declaration to be filed at the corporate tax department

**Providers:** List of approved providers available from the Ministry of Higher Education and Research

[Simulator](#)

### Innovation tax credit (*Crédit d'impôt innovation – CII*)

**Contact:** Ministry for Higher Education and Research

**Aim:** Facilitate the financing of R&D operations for SMEs

**Target:** All industry sectors

**Eligibility:** Only SMEs

**Amount:** 20% of the expenses required for designing and creating prototypes or pilot plants for new products

**Ceiling:** The base is capped at €400,000 per year and per company

**Procedures:** Declaration to be filed at the corporate tax department. SMEs may, under certain conditions, benefit from an early repayment of the innovation tax credit

[Simulator](#)

## #5 KEY STAKEHOLDERS

**BPI FRANCE**  
bpifrance.fr

**GENERAL SECRETARIAT FOR INVESTMENT**  
gouvernement.fr/le-secretariat-general-pour-l-investissement

**FRENCH NATIONAL RESEARCH AGENCY**  
agence-nationale-recherche.fr

**FRENCH MINISTRY FOR HIGHER EDUCATION, RESEARCH AND INNOVATION**  
enseignementsup-recherche.gouv.fr

#### DISCLAIMER

This guide is provided for information only and cannot replace the advice of a professional. The above information is not exhaustive, and Business France cannot be held liable for omissions or errors. This document may be shared on condition that it is accompanied by all the relevant information and this disclaimer.



# Encouraging investments to protect the environment



#1 Key figures



#2 Business France support



#3 What are the main schemes?



#4 Key stakeholders



France reaffirmed its steadfast commitment to the environment at the Paris Agreement on Climate Change at the end of the COP 21 conference and by its Make Our Planet Great Again (MOPGA) initiative.

These commitments include a series of innovative, ambitious measures to bring together all stakeholders in this planetary struggle.

In order to meet the energy and ecological transition targets set out, France has rearranged financial support to its businesses, local authorities and research bodies.

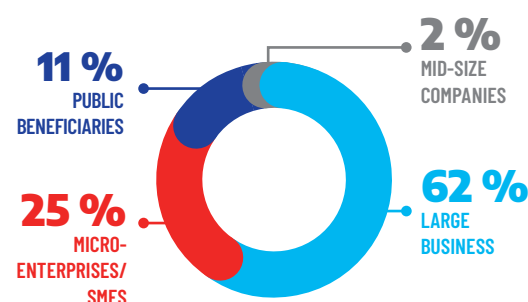
Generally, investments should allow to go further than regulatory obligations. Admissible costs cover the supplementary investment costs involved in protecting the environment.



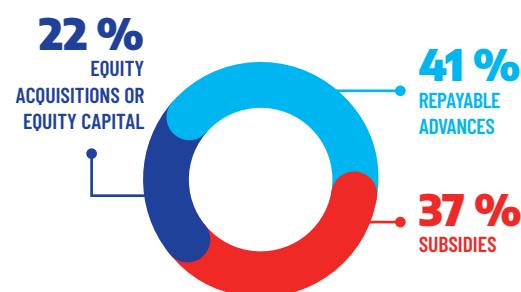
## #1 KEY FIGURES

€2.5 billion of aid; 745 projects

### BENEFICIARIES



### TYPES OF INTERVENTION



### SECTORS



**44%**  
TRANSPORT  
AND VEHICLES  
OF THE FUTURE  
311  
winning projects  
€902 million  
in aid



**36%**  
RENEWABLE ENERGY,  
ENERGY STORAGE  
AND ELECTRICAL  
NETWORKS  
187  
winning projects  
€1,106 million  
in aid



**11 %**  
BUILDING,  
INDUSTRY AND  
AGRICULTURE,  
BIO-BASED  
CHEMISTRY  
112  
winning projects  
€288 million  
in aid



**9 %**  
CIRCULAR  
ECONOMY  
AND WASTE,  
WATER AND  
BIODIVERSITY  
135  
winning projects  
€214 million  
in aid

Source : ADEME, 2018

## MAKE OUR PLANET GREAT AGAIN INITIATIVE WHAT DOES IT INVOLVE?



With its openness to the world and its policy of attracting talent in any form, France is determined to attract investors and to support their expansion across the nation. France is at the forefront of innovation and development of the industries of the future, such as clean technology and green finance, which will be the engine of tomorrow's growth.

### Together making France a leader in the green economy

Investment needs in the sectors of energy transition are among the largest in Europe, due to the ambitious objectives pursued by public policies to reduce fossil energy consumption, increase the production of renewable energies, and reduce greenhouse gases.

All sectors are called upon to take part in this green revolution. The mobility of people and towns and cities will change to make France an example for the world.

**These ambitions open the possibility to companies the world over to access a market of the future!**



## #2 BUSINESS FRANCE SUPPORT

Helping you make a success of your project

### ↓ YOUR ACTIONS

**Presenting** your project to Business France  
Expressing your needs and expectations

**Forwarding** a detailed business plan

**Meeting** financial backers  
Presenting your project

**Clarifying** your project  
Making a formal request

**Filing** your request  
Exchanging with the appraising body

**Signing** an aid agreement  
Justifying investments and jobs created

### ↓ OUR SUPPORT

**Analyzing** your project

- Targeting aid
- Informing you of the terms and conditions

**Selecting** tools

- Ensuring the pre-eligibility of your project with financial backers
- Establishing a list of eligible expenditure

**Putting** you in touch with financial backers

- Connecting you with the right contact people
- Supporting you during the presentation of your project

**Approving** the eligibility of your project, thresholds and eligible expenditure to be respected

**Processing** your dossier  
Examining the business plan, the leveraging of aid, and the economic impact

**Assigning** aid and paying out funds according to the agreed procedures

● Business France and its regional partners

● Public financial backers



## #3 WHAT ARE THE MAIN SCHEMES?

### SUPPORT FROM THE FRENCH ENVIRONMENT AND ENERGY MANAGEMENT AGENCY (ADEME)

#### Heat fund

Support for the development of renewable heat

#### Decision-making support

Support for design work undertaken by consultants on ADEME topics

#### Waste fund

Support for the development of the circular economy

#### Research, development and innovation

Subsidies or repayable advances for research, development and innovation projects through calls for projects

### SUPPLEMENTARY SUPPORT

#### Regional aid

Aid from local authorities intervening in addition to the ADEME

#### Bpifrance

Financial intervention or investment notably through the eco-energy loan

#### Water agencies

Subsidies or loans to achieve a balanced management of water resources



■ Schemes capped by regional aid area and company size.  
Notification threshold to the European Commission: €7.5 million

## WHAT ARE THE THRESHOLD CONDITIONS AND LIMITS?

### Heat fund - Support to develop renewable heat

**Nature:** Investment subsidy for projects to:

- Produce renewable heat (biomass, solar thermal, geothermal, etc.)
- Heating networks

**Target:** Businesses or local authorities responding mainly to:

- A BCIAT call for projects (Heat Biomass – Industry, Commerce & Agriculture) aimed at businesses for the largest biomass projects (output of more than 1,000 toe/year).
- Regional calls for projects managed by regional ADEME offices in conjunction with the French regional governments.

**Indicative support rate:** 20-40%, mostly defined by fixed rates and enabling competitive solutions

**Contact:** ADEME

### Waste fund - Support to develop the Circular Economy

**Aim:** A subsidy for projects involving waste prevention, collection and recycling, and organic, material and energy recovery

**Rate:** Up to 30%

**Calculation base:** Up to €10 million

**Contact:** ADEME

### Decision-making support

**Nature:** Subsidies for design work undertaken by external engineering and consultancy firms in all areas covered by ADEME: energy efficiency, renewable energies, the circular economy, waste, transport, air quality plans etc.

**Target:** Businesses and local authorities

**Support:** 50-70% depending on beneficiaries: large companies, medium-sized companies, small companies and non-economic activities

**Maximum eligible expenditure:**

- €50,000 for diagnosis
- €100,000 for project support studies

**Access conditions:** Exclusions exist (notably for companies with more than 250 employees) as well as eco-conditionality criteria on the qualification of design and research offices

**Contact:** ADEME

### Research, development and innovation

**Nature:** Support through subsidies or repayable advances to research, development and innovation programs, principally selected by calls for projects

**Target:** Businesses, research organizations, associations or local authorities

**Maximum rate of aid:** Depends on beneficiaries

- 70% for research on new knowledge
- 50-70% for industrial research
- 25-50% for experimental development
- 50% for innovation for SMEs

The aid rates are fixed at each call for tenders.

**Contact:** ADEME

### Eco-energy loan

**Nature:** Financing your equipment eligible for energy savings certificates

**Target:** Micro-enterprise / SME

**Ceiling:** Between €10,000 and €100,000  
Preferential rate

**Duration:** Five years, including one year deferred as capital. No guarantee, personal or otherwise.  
Equity loan

**Contact:** Bpifrance

## #4 KEY STAKEHOLDERS

THE FRENCH ENVIRONMENT AND ENERGY  
MANAGEMENT AGENCY (ADEME)  
ademe.fr

THE WATER AGENCIES  
lesagencesdeleau.fr






BPIFRANCE  
bpifrance.fr

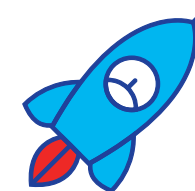
MINISTRY FOR THE ECOLOGICAL  
AND INCLUSIVE TRANSITION  
ecologique-solidaire.gouv.fr

#### DISCLAIMER

This guide is provided for information only and cannot replace the advice of a professional. The above information is not exhaustive, and Business France cannot be held liable for omissions or errors. This document may be shared on condition that it is accompanied by all the relevant information and this disclaimer.

# How to develop your startup project

-  **#1** Key figures
-  **#2** Business France support
-  **#3** Find the funding that matches your needs
-  **#4** What are the main schemes?
-  **#5** Key stakeholders



## Entrepreneur is the new France !

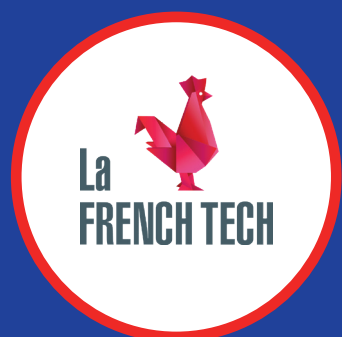
In 2020, France was once again very well represented at the Consumer Electronics Show (CES) in Las Vegas with just over 200 french startups in attendance of which 150 under the French Tech banner. It is safe to say that France is doing well with 40 products from French startups recognized at this year's CES Innovation Awards, ranking France at the 1st place among European nations and 4th Worldwide.

What's the secret behind this success?

“La French Tech” comprises both the French authorities and other institutions, all of which are supporting a favorable

# LA FRENCH TECH

## WHAT'S IT ALL ABOUT?



**“La French Tech” is a support network for startups that are created or developed in France.**

It is a collective brand launched by the French government in 2014. “La French Tech” aims to help create tech champions, promote French expertise on the international stage and attract foreign investors. To increase the initiative’s effectiveness, the government has launched a call for projects for the accreditation of regions. Once accredited, these regions will commit to doing their best to support the ecosystem and to put in place the necessary systems to ensure startups move beyond being mere ideas and become tech champions.



## #1 KEY FIGURES

The other Startup nation



### La French Tech

the open brand  
of the French startup scene

**15 000+ startups**

**US\$ 5.1 billion**  
raised in 2019

**736 deals - 6,9M€/deal**

**300 incubators**

**50 accelerators**



### Station F

The world's largest startup  
incubator is in Paris

**1 000+ startups**  
**35 public services**

**40 VC funds**

**600 events/year**

**30+ startup programs**

## SECTORS

### HEALTH

**€1,2 billion**  
raised 2019  
against  
**€709 million**  
in 2018

### DOCTOLIB

raised  
**\$150 M**  
**(late VC)**  
in 2019

### ENTERPRISE SOFTWARE

**€941 million**  
raised 2019  
against  
**€528 million**  
in 2018



**ECOVADIS**  
raised  
**\$200 M**  
**(Growth equity)**  
in 2020

### FINTECH

**€701 million**  
raised 2019  
against  
**€399 million**  
in 2018

### QUONTO

raised  
**\$104 M**  
**(Serie C)**  
in 2020

## ✓ Identify

France offers a range of state aid schemes, as well as calls for projects and events to support the growth strategy of both startups and entrepreneurs.

Business France helps you to identify exactly what you need for each stage of your startup project development.

## ✓ Secure

Business France offers a dedicated support service for foreign entrepreneurs who have chosen France as the place to create and develop their startups.

Through a personalized support program, Business France provides you with information on and lets you discover more about a dynamic and constantly growing ecosystem.

Business France informs, guides and supports foreign talent and their families with their international professional mobility.

[welcometofrance.com](http://welcometofrance.com)

## ✓ Connect

Whether it be incubators, accelerators, innovation clusters, financiers, Bpifrance, venture capitalists, tech events, we can connect you with our partners who contribute to the success of “La French Tech” on a daily basis.

## HELPING YOU DEVELOP YOUR STARTUP

### ↓ YOUR ACTIONS

**Presenting** your project to Business France

**Forwarding** a business plan

**Meeting** financial backers and the ecosystem

**Clarifying** your project

**Filing** your support request

**Starting up** your French site

### ↓ OUR SUPPORT

**Analyzing** your project  
- Targeting aid  
- Informing you about the ecosystem

**Selecting** tools

**Putting** you in touch with financial backers and venture capitalists and connecting you with the right contact people

**Approving** the eligibility of your project with the schemes identified

**Processing** your dossier and assigning aid

**Facilitating** your installation

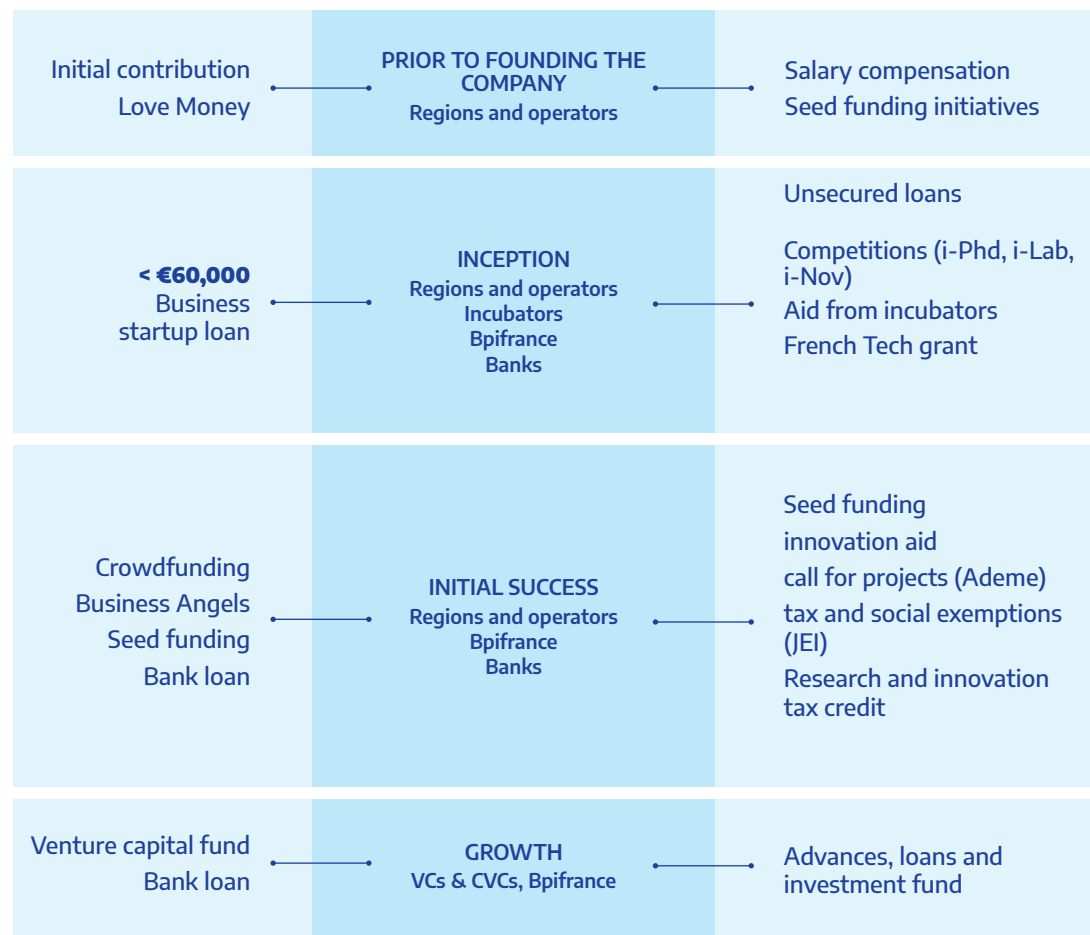
● Business France ● Business France partners



## #3 FIND THE FUNDING THAT MATCHES YOUR NEEDS

↓ PRIVATE

PUBLIC ↓



## AND AFTER?

### FT120

program: France's growth-stage program was built to provide unprecedented support for 123 companies in France pooling resources from across the various government agencies, ministries and public service departments

#### BENEFIT 1

3 wishes granted

#### BENEFIT 2

Increased visibility

#### BENEFIT 3

Bizdev opportunities with the State

#### BENEFIT 4

Support from a dedicated "Startup Engagement Manager"

#### BENEFIT 5

Unlimited access to a range of services offered by 45+ ministries, government agencies and public services

### Next 40

"honors 40 of France's highest performing tech champions and grants them access to France's most powerful growth-stage program."

#### BENEFIT 1

Spotlight as one of France's 40 future tech champions

#### BENEFIT 2

Pre-IPO support from Euronext

#### BENEFIT 3

Admission into French Tech 120

### FT Visa

"a simplified, fast-track scheme for non-EU startup employees, founders and investors to obtain a residence permit for France."

#### BENEFIT 1

The visa automatically extends to your spouse and minor dependent children

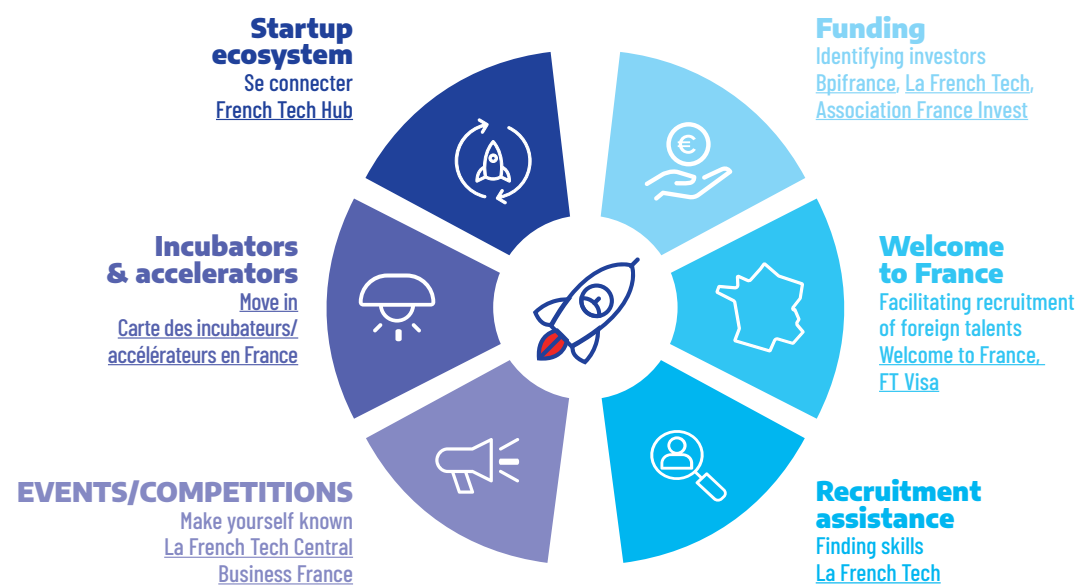
#### BENEFIT 2

Valid for four years—and renewable.





## #4 WHAT ARE THE MAIN SCHEMES?



## French Tech metropolises [lafrenchtech.com](#)



## WHAT ARE THE THRESHOLD CONDITIONS AND LIMITS?

### Innovation development loan (*Aide pour le développement de l'innovation*)

**Aim:** Any independent or collaborative research, development and innovation (RDI) project, aimed at developing innovative products, processes or services with significant prospects for industrialization and commercialization

**Target:** SMEs and companies with fewer than 2,000 employees

**Amount:** Repayable advance or interest-free loan up to €3 million. Assistance offered by Bpifrance may vary depending on the characteristics and progress of the project, the level of risk, the company profile, or the actual incentiviveness of the aid (aid rate of between 25-65%, according to the total eligible expenditure base)

**Contact:** Bpifrance

### Tax relief for young innovative companies (*JEI*)

**Aim:** Tax status enabling young SMEs to finance their R&D activity

**Target:** SMEs under eight years old created from scratch

**Amount:** 100% corporate tax exemptions for the first financial year and 50% thereafter within the agreed ceiling.

Exemption for eight years from certain employers' mandatory social security contributions (sickness, old age, family allowances, etc.).

May be combined with the research tax credit

**Eligibility:** Companies for whom R&D expenditure equates to at least 15% of total expenditure per financial year, are more than 50% owned by private individuals or by investment funds, and are a SME under eight years old created from scratch

**Contact:** Local tax authorities

### Early-stage development loan (*Prêt amorçage invest*)

**Nature:** To help bolster a company that has just successfully raised funds and support its development and growth by providing additional financing in the form of a development loan.

**Eligible companies:** Young companies under eight years old having successfully raised a minimum of €200,000 in seed money

**Minimum amount:** €100,000

**Maximum amount:** €500,000 per intervention

**Duration:** Eight years with a grace period of 36 months. Loan supported by InnovFin SME guarantee, with financial support from the EU as part of the Horizon 2020 program and the European Fund for Strategic Investments (EFSI)

No guarantee on the company's assets or on those belonging to the head of the company

**Contact:** Bpifrance

### French Tech grant (*Bourse French Tech*)

**Nature:** Support projects requiring a phase of maturation and techno-economic validation. The grant can help with the following: business models, technological feasibility, changes in usage, ergonomic user interfaces, service design, tests, marketing, technical support, legal matters, corporate internal reorganization and partnerships.

**Eligible companies:** Young companies with real growth potential created less than a year ago and registered in France or natural person

**Amount:** A grant that can cover up to 70% of the estimated eligible expenditure up to a limit of €30,000. The French Tech grant is financed by both Bpifrance and the National Institute of Industrial Property (INPI) for brand new projects

**Contact:** Bpifrance

### Innovation Fund (*Fonds pour l'innovation*)

**Amount:** €10 billion

**Nature:** Finance breakthrough innovations

**Eligibility:** The fund aims to support and finance startups and projects specializing in breakthrough technologies, and help public laboratories, SMEs and large corporates focus on major challenges

**Targeted sectors:** Artificial intelligence, nanoelectronics, biomanufacturing, new generation batteries and autonomous vehicles

**Contact:** Bpifrance

### French Tech Seed Fund (*Fonds French Tech Seed*)

**Amount:** €400 million grant from the National Investment program

**Nature:** To provide France with the tools to support pre-seed funding on a large scale

**Eligibility:** The fund supports fundraising for technology startups from laboratories, incubators and technology transfer accelerator companies (SATT)

**Ticket:** Investments are generally up to €250,000 because the fund is intended for pre-seed development

**Contact:** Bpifrance

## #5 KEY STAKEHOLDERS

LA FRENCH TECH  
lafrenchtech.com

BPI FRANCE  
bpifrance.fr

### DISCLAIMER

This guide is provided for information only and cannot replace the advice of a professional. The above information is not exhaustive, and Business France cannot be held liable for omissions or errors. This document may be shared on condition that it is accompanied by all the relevant information and this disclaimer.



## **BUSINESS FRANCE**

77, boulevard Saint-Jacques

75680 Paris Cedex 14

Tél. : +33 1 40 73 30 00

Business France is the national agency supporting the international development of the French economy, responsible for fostering export growth by French businesses, as well as promoting and facilitating international investment in France.

It promotes France's companies, business image and nationwide attractiveness as an investment location, and also runs the VIE international internship program. Business France has 1,500 personnel, both in France and in 64 countries throughout the world, who work with a network of public- and private-sector partners.

## **CONNECT - FAST-TRACK - SUCCEED**

For further information, please visit: [www.businessfrance.fr](http://www.businessfrance.fr)

### **Editorials:**

**Chief Editor:** Sandrine Coquelard, Head of Legal and business environment department

**Lead Author:** Bertrand Gaillard, legal expert

**Designed and produced by:** Hopscotch - Business France

**Credit Photo:** Getty image